

Regional Rail

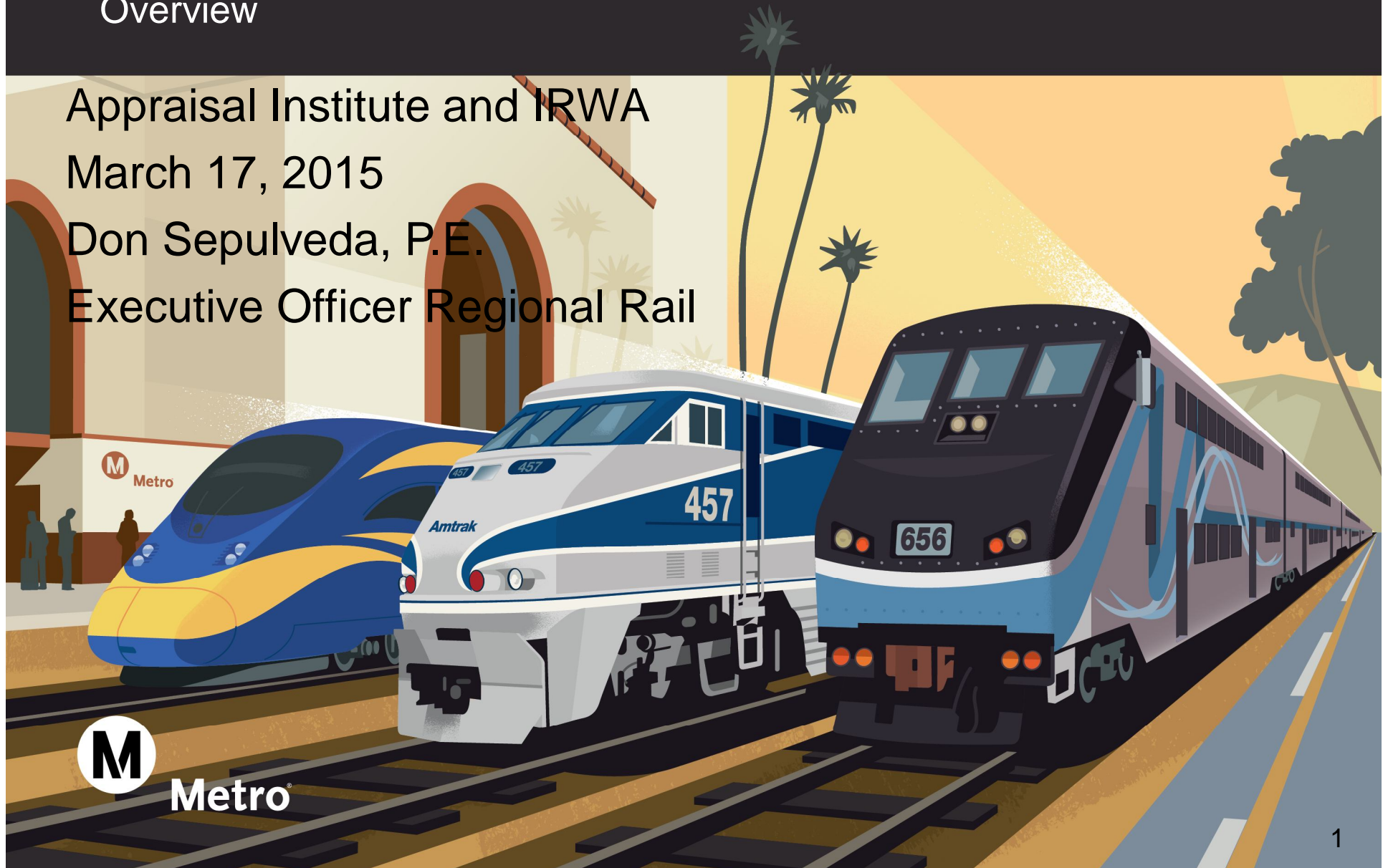
Overview

Appraisal Institute and IRWA

March 17, 2015

Don Sepulveda, P.E.

Executive Officer Regional Rail

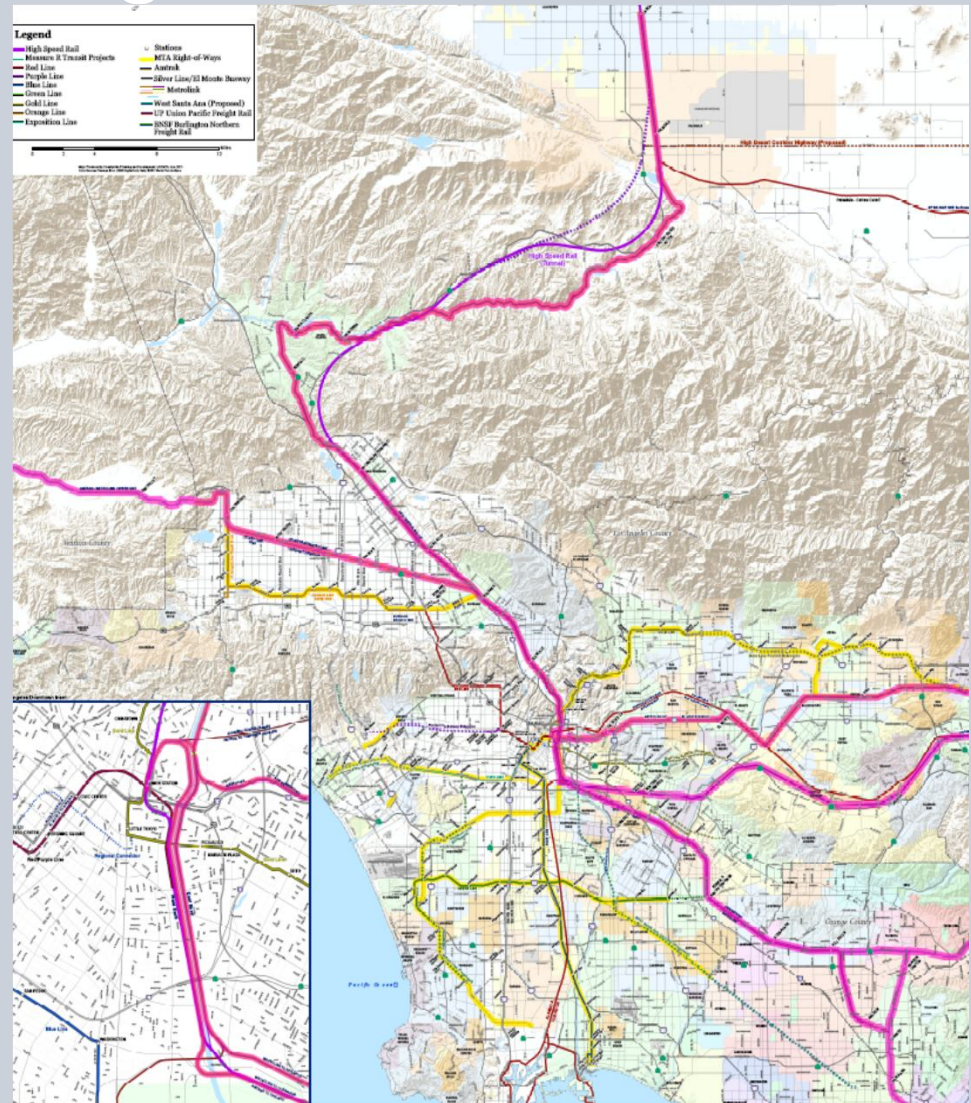


LAUS as a Regional Transportation Hub



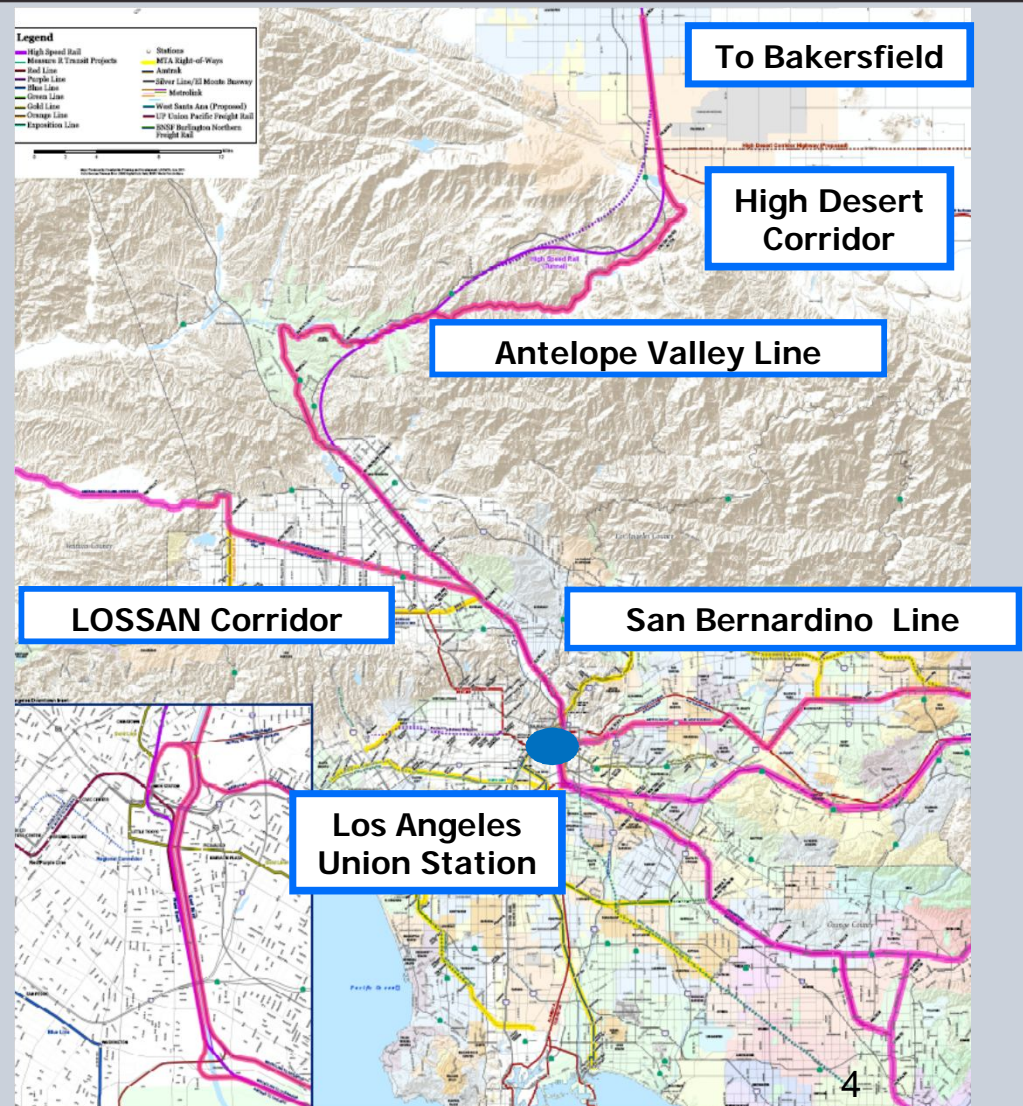
What is Metro Doing?

- > Metro is building \$30B in transit projects.
- > Regional Rail is building \$842M and counting.
- > Metro is reshaping the County transportation system and building the future.



What is Metro Regional Rail

- > Manage more than 190 miles of R/W in L.A. County
- > Develop capital improvement projects and programs.
- > Coordinate with Metrolink, Amtrak, CHSRA, and freight.



California High Speed Rail

- > 2014 Business Plan places an emphasis on southern California
- > The Blended Service identifies an Initial Operating Segment to the San Fernando Valley in 2022.
- > This creates the need for substantial infrastructure development in the region to meet the HSR program.
- > Advanced timeline.
- > MOU provides for \$1B of advance investment in southern California
- > Identified projects have independent utility.

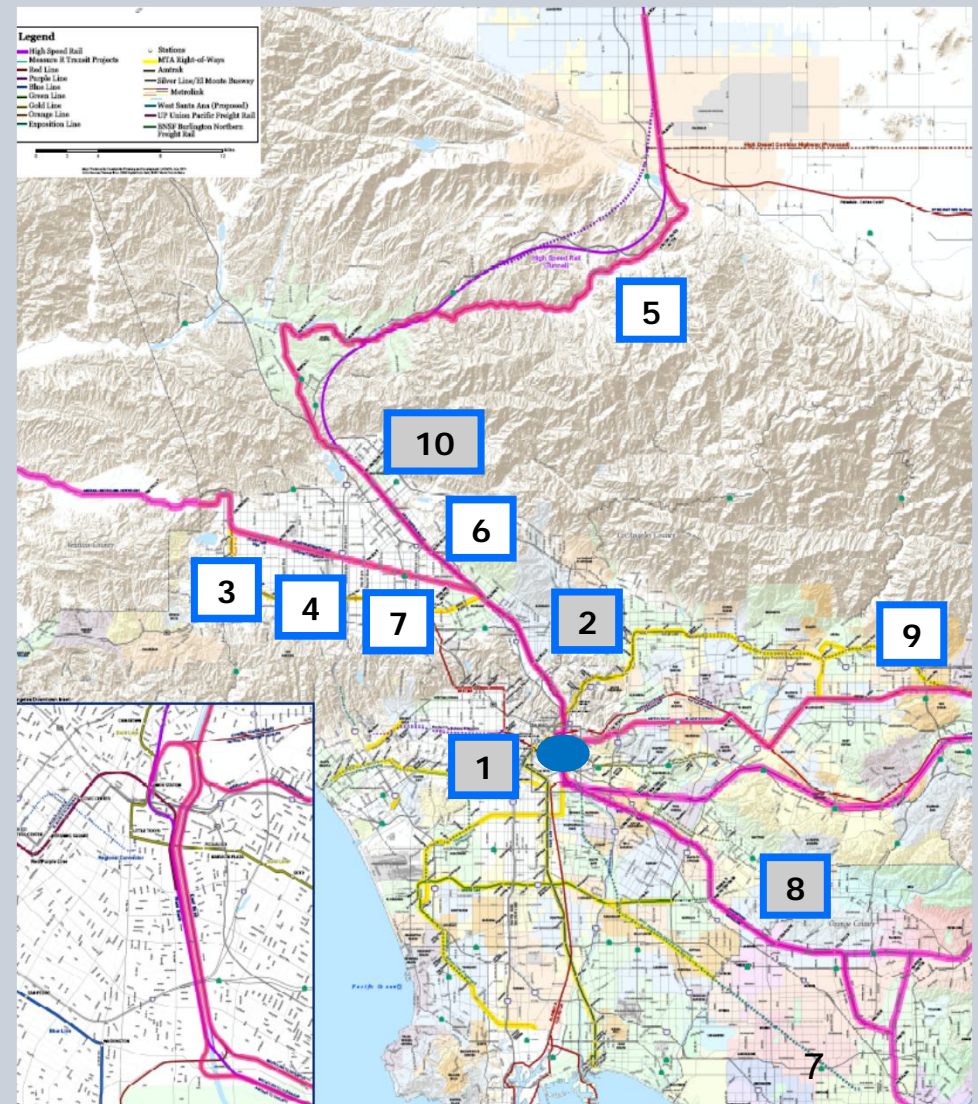
Regional Rail Capital Program

- > Advancing projects address the following:
 - > Grade Crossing and Corridor Safety on Metro owned right-of-way.
 - > Capacity.
 - > Community needs.
- > Advancing these projects:
 - > Facilitates the high speed rail MOU.
 - > Develops programs that are attractive for other sources of funding.
 - > Benefits communities and passengers throughout L.A. County.

L.A. County Regional Rail Projects

1. SCRIP *
2. Doran St. Grade Separation *
3. Raymer to Bernson Second Track
4. Van Nuys Second Platform
5. Vincent Grade Siding and Platform
6. Bob Hope Airport/Hollywood Way Station
7. Bob Hope Airport Station Pedestrian Overpass
8. Rosecrans/Marquardt Grade Separation *
9. CP White to Lone Hill Env.
10. Brighton to Roxford Double Track*

* Denotes MOU projects



Regional Rail Capital Program

	Project (* Denotes MOU projects)	Est. Const. Cost	Status
1	Southern California Regional Interconnector Project (SCRIP) *	\$ 350M	Environmental
2	Doran Street Grade Separation *	\$ 40M	Environmental
3	CP Raymer to CP Bernson Double Track	\$ 85M	Engineering
4	Van Nuys Second Platform	\$ 35M	Engineering
5	Vincent Grade Siding and Platform	\$ 13M	Engineering
6	Bob Hope Airport/Hollywood Way Station	\$ 3.75M	Engineering
7	Bob Hope Airport Station Ped. Overcrossing	\$ 15M	Eng. 1/15
8	Rosecrans/Marquardt Grade Separation *	\$ 120M	Env. 1/15
9	CP White to Lone Hill	\$ 70M	Early 2015
10	Brighton to Roxford Double Track *	\$ 110M	Env. 1/15
	Total	\$ 841.75M	

LAUS Run-Through Tracks



Metro®

Southern California Regional Interconnector Project



Southern California Regional Interconnector Project

- > Serves all commuter and intercity rail in southern California.
- > Extends at least four LAUS platform tracks to exit at the south end of the yard.
- > Increases station capacity by 40% - 50%.
- > Reduces GHG by 44%.
- > Creates operational flexibility.
- > Environmental work is underway
- > Working with the CHSRA to incorporate high speed rail.

Bob Hope Airport Pedestrian Bridge

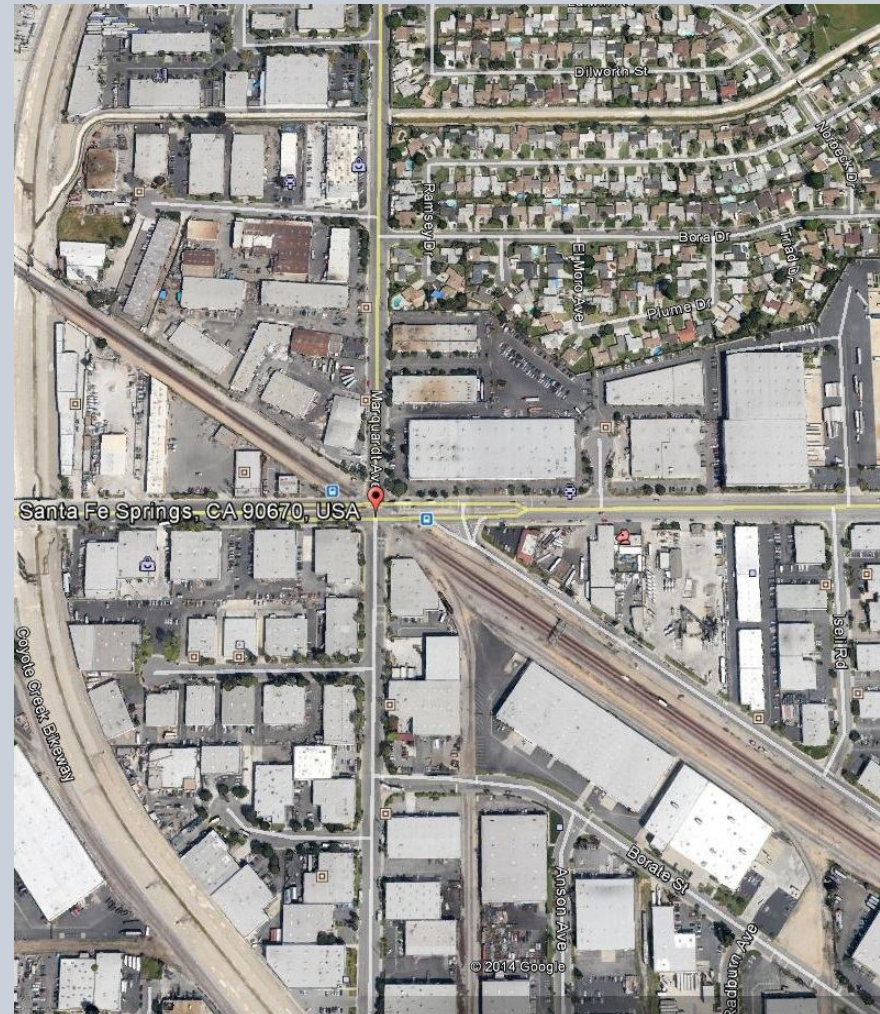
- > Extends the elevated walkway from the Regional Intermodal Transportation Center to the existing Burbank Airport Station.
- > Enhances “Plane to Train” connections.
- > Metro awarded a state STIP allocation to connect the Regional Intermodal Transportation Center (RITC) with the existing Bob Hope Airport Station.
- > Project budget is \$15M
- > The Regional Rail team will be working with the Airport and Metrolink to develop this project.

Bob Hope Airport Pedestrian Bridge



Rosecrans/Marquardt Grade Separation

- > Grade separates the No.1 hazardous crossing in the state.
- > Part of the BNSF Triple Track Project.
- > Needed for safety and capacity.
- > Benefits passenger and freight rail.



Grade Crossings in L.A. County

Incidents at Los Angeles County at-grade crossings over the last 5 years

Year	Accidents	Fatalities	Injuries
2009	24	5	4
2010	20	6	9
2011	21	5	11
2012	20	9	19
2013	32	12	35
Totals	117	37	78

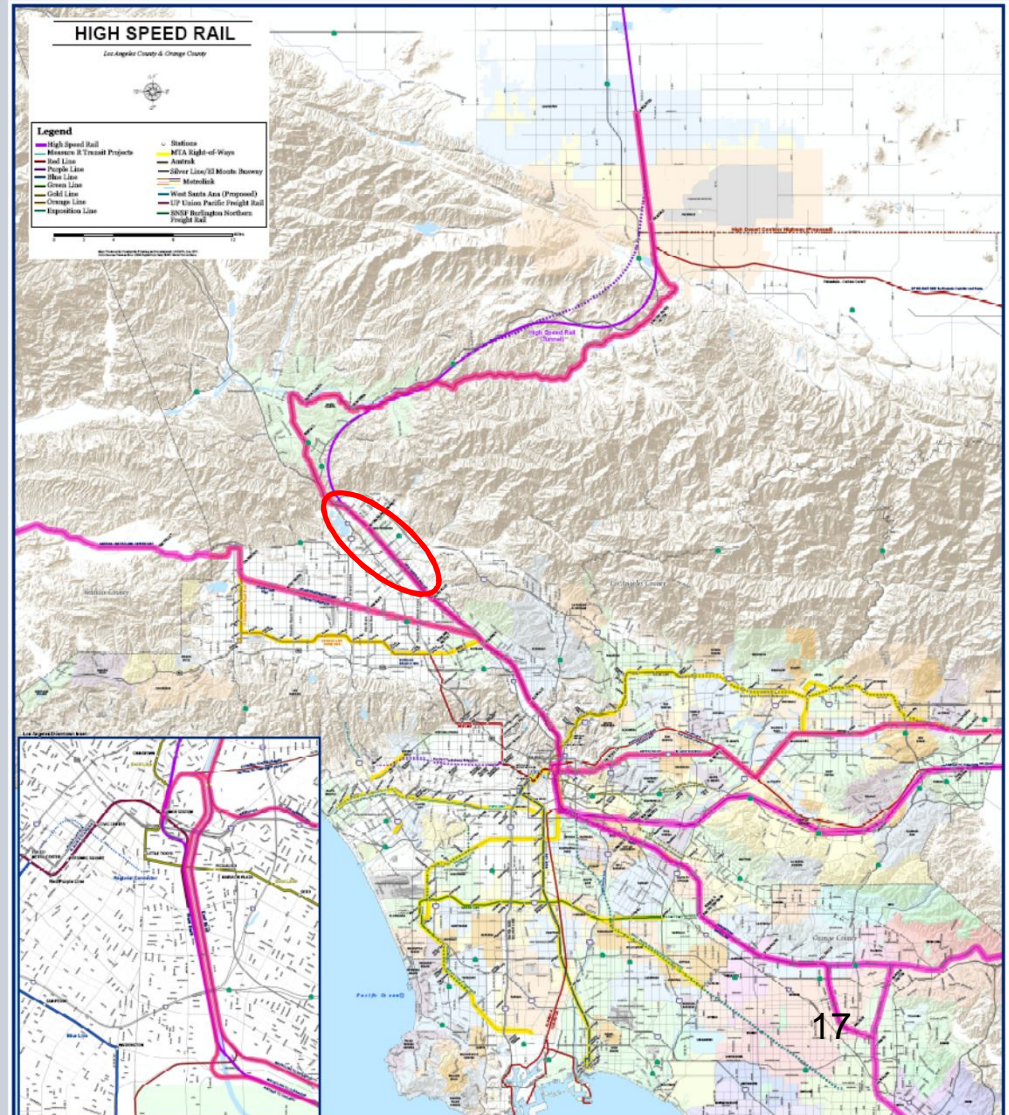
Source: Federal Railroad Administration

L. A. County Grade Crossing and Corridor Safety Program

- > Examine over 150 at-grade crossings.
- > Develop an overall strategy to corridor solutions based on engineering, education, and enforcement.
- > Multi-phased program.
- > Establish funding strategies to address crossing and corridor issues.

Brighton to Roxford Double Track

- > Identified in AVL study as a significant constraint.
- > Second on the regional MOU priority list.
- > Will address grade crossing safety issues in the corridor.
- > Will facilitate HSR.



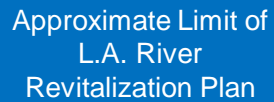
Doran Street Grade Separation

- > Project funded with
 - > Measure R
 - > ARRA
 - > Prop. 1A
- > Env. and Eng. Underway
- > Working with the stakeholders and the cities of Los Angeles and Glendale on solutions.



Alternative 1

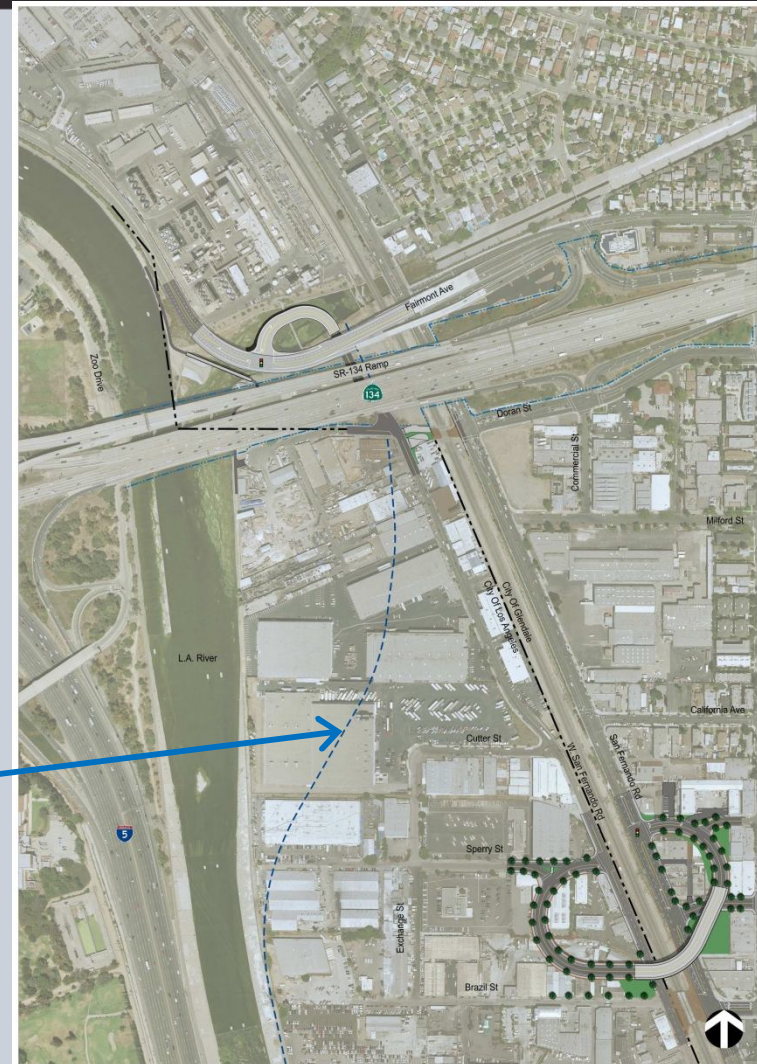
- > Closes Doran Street Only.
- > Impacts the L.A. River Revitalization Plan.
- > Significant right-of-way impacts.
- > Right-of-way impacts.
- > Would require a second grade separation at Broadway/Brazil in the near future.



Alternative 2

- > Does not impact L.A. River Revitalization effort.
- > With northern connector able to close two crossings.
- > Minimizes long term impacts of a second grade separation.
- > Minimizes long term right-of-way impacts.

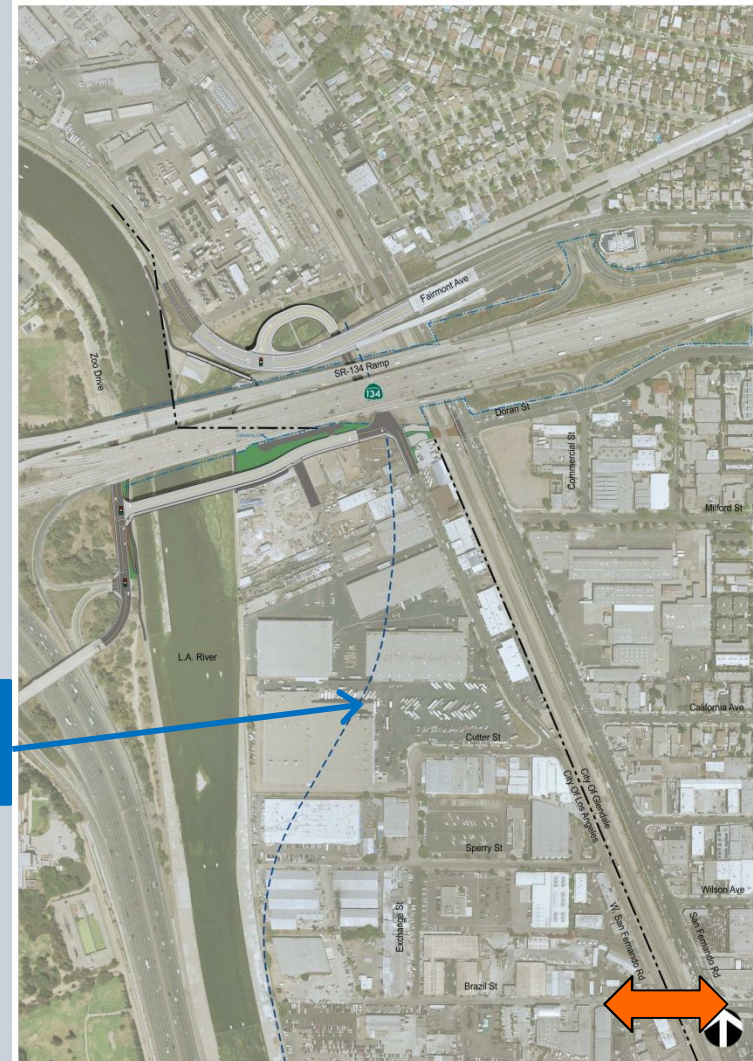
Approximate Limit of
L.A. River
Revitalization Plan



Alternative 3

- > Closes Doran Street only.
 - > Impacts the L.A. River.
- > Puts truck traffic where it is not presently.
- > Would require a second grade separation at Broadway/Brazil in the near future.
- > Significant longer term impacts

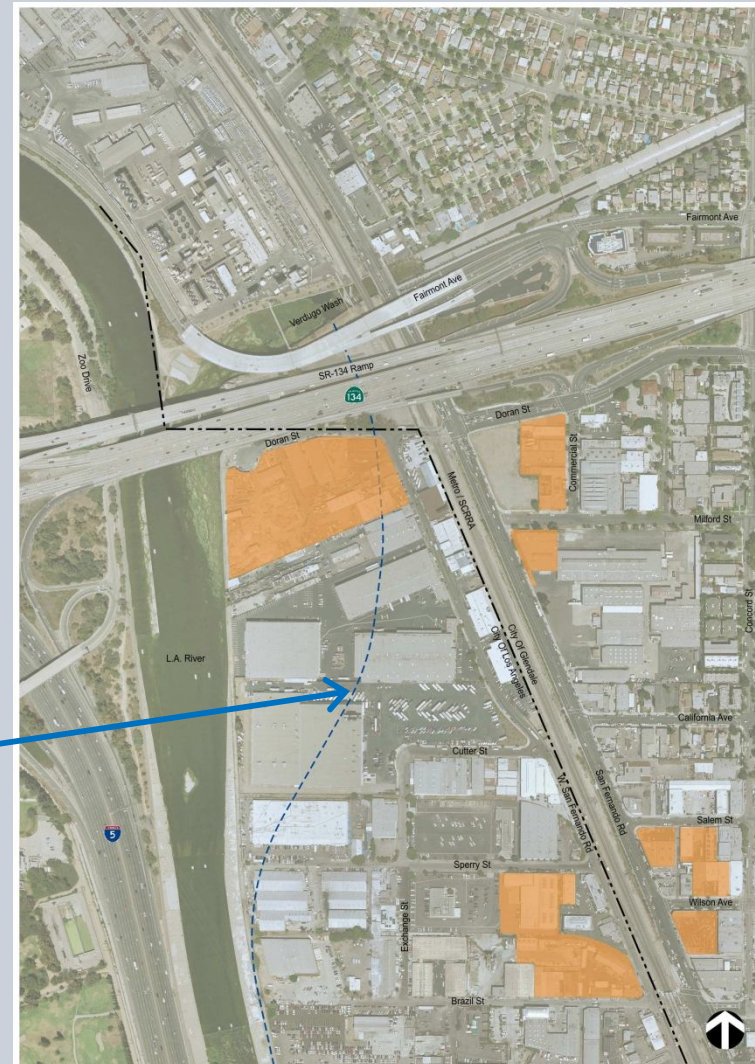
Approximate Limit of
L.A. River
Revitalization Plan



Alternatives 1 and 2 ROW Impacts

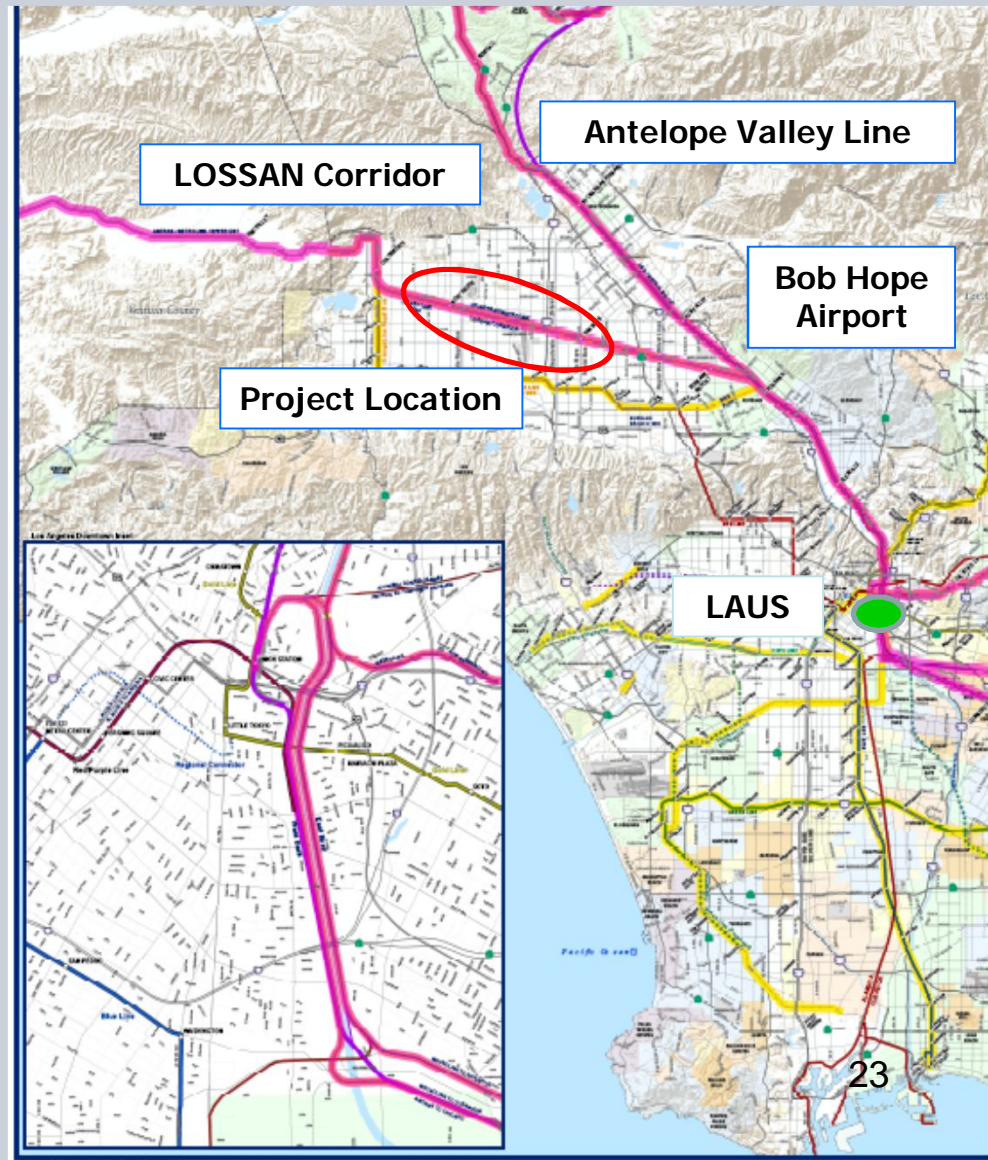
- > Significant ROW impacts due to each alternative.
- > Efforts have been to minimize these impacts with engineering.

Approximate Limit of
L.A. River
Revitalization Plan



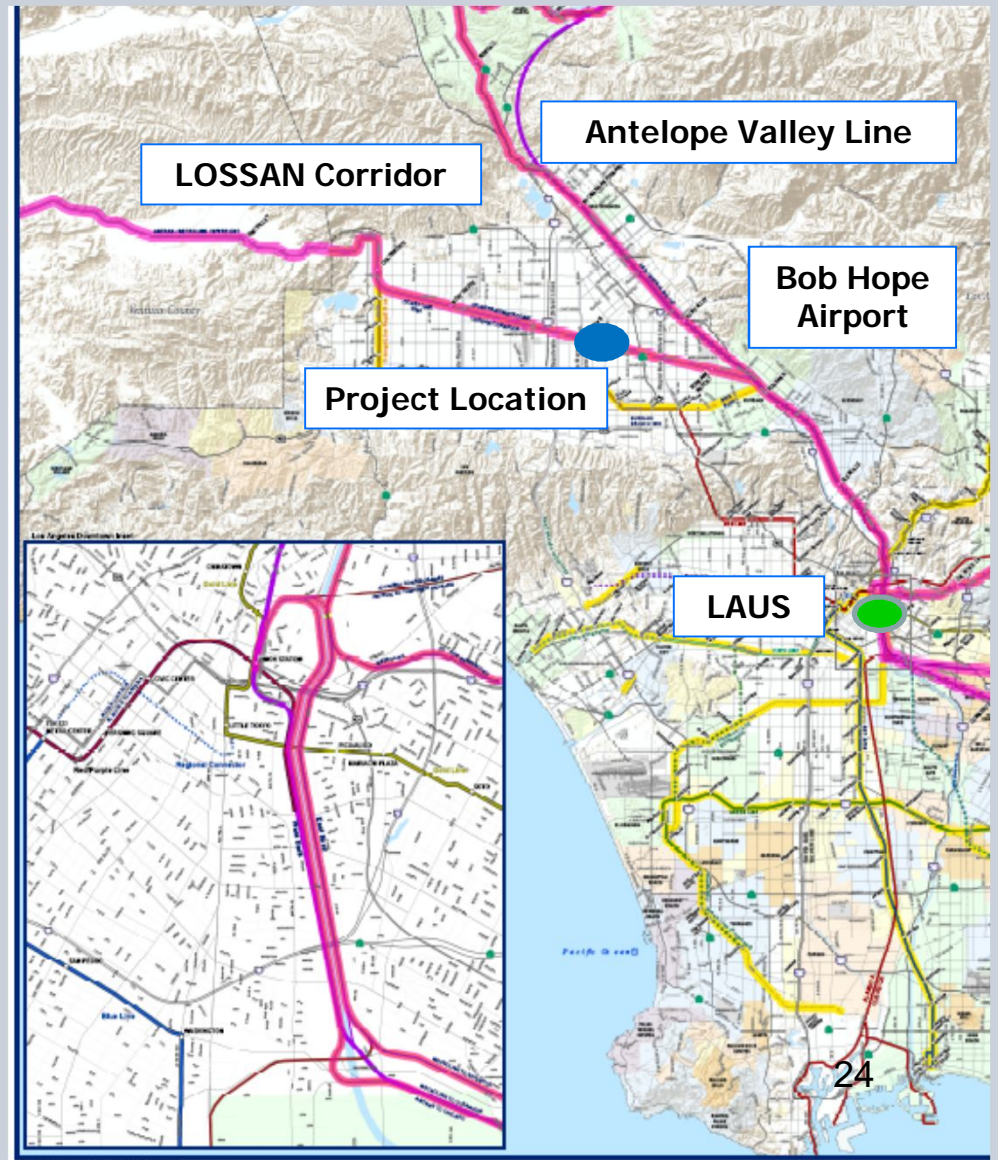
Raymer to Bernson Second Track

- > Project is in the final environmental stage.
- > Fully funded project.
- > Engineering funds allocated by the CTC January 2014.
- > Board award of PS&E in June 2014.
- > The project is in at 65%.



Van Nuys Second Platform

- > Adds a second platform at the Van Nuys Station.
- > Fully funded project.
- > Engineering funds allocated by the CTC Dec. 2013.
- > Board award of PS&E contract in May 2014.
- > The Project is at 35%.

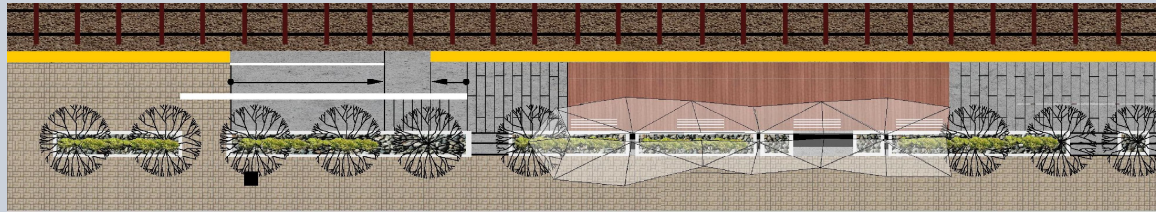


Bob Hope Airport Station

New station on the Metrolink Antelope Valley Line. This provides a north county connection to the airport.

- > Funded by Measure R and a federal grant.
- > Partnering with the airport.
- > Will be served by shuttle busses between the station and RITC.

Bob Hope Airport Hollywood Way Station



What is in the Future?

- > Advance projects and programs that:
 - > Enhance capacity,
 - > Improve mobility for the region,
 - > Provide safety benefits.
- > Continue to establish the programming need in L.A. County:
 - > Measure R,
 - > Grade crossing funding programs,
 - > Other sources.

